

PBB30C Series

COSEL AC/DC POWER SUPPLY

FEATURES

- 600W AC/DC Power Supply,
- Very small size and light weight
- For medical electric equipment,
- ANSI/AAMI ES60601-1; EN60601-1 3rd;
- IEC60601-1-2 4th Ed.,
- With AUX output,
- Constant current regulation,
- Output voltage can be varied to near 0V,
- With various alarms,
- Parallel operation possible,
- Remote monitoring and setting values can be changed

SPECIFICATIONS

INPUT

Voltage	85~264Vac
Current	3.2A @ 230Vac
Frequency	47-63Hz.
Power factor	0.95 Typ (I _o =100%) at AC in 230Vac
Inrush current	40A typ (I _o =100%) at AC in 230Vac
Leakage current	0.5max (ACIN 240V 60Hz, I _o =100%, According to IEC60601-1)

OUTPUT

DC Output	5V, 12V, 15V, 24V, 32V, 48VDC
Voltage Adjustment	See selection table
Output Power	Typically 600W See selection table
Minimum Load	Unit will operate with zero load.
Output Ripple	240mVp-p (0 to 50°C)
Ripple Noise	300mVp-p (0 to 50°C)
Line regulation	Typically 0.4%
Load regulation	Typically 0.8%
Temperature drift	Typically 0.4%
Start up time	400ms typ
Efficiency	Typ. 92% @ 230Vac

ENVIRONMENTAL

Operating Temperature	-20°C to 71°C
Cooling	Internal fan cooling.
Humidity	20%-90% non-condensing.
Vibration	10Hz-55Hz at 2G
Shock	20G 11ms X, Y, Z axis



PROTECTION

Over Voltage	See selection table
Over current protection	Works at approximately 105% of rated current with auto recovery
Remote sensing	Provided
Remote on/off (RC)	Provided
DC_OK Lamp	LED (Blue)
Alarm Lamp	LED (Orange)
Communication	Provided (Extended UART)
Isolation Input - Output	AC 4,000V 1minute, Cutoff current = 10mA, DC500V 50MΩ min (At Room Temperature) 2MOPP
Isolation Input - Case	AC2,000V 1minute, Cutoff current = 10mA, DC500V 50MΩ min (At Room Temperature) 1MOP
Isolation Output - Case	AC500V 1minute, Cutoff current = 100mA, DC500V 50MΩ min (At Room Temperature)

STANDARDS APPROVALS

Safety	UL60950-1, C-UL(CSA60950-1), EN60950-1, ANSI/AAMI ES60601-1, EN60601-1 3rd,Complies with IEC60601-1-2 4th Ed
Conducted noise	Complies with FCC Part15 classB, VCCI-B, CISPR32-B, EN55011-B, EN55032-B
Harmonic Attenuator	Complies with IEC61000-3-2 (class A)

MECHANICAL

Connector	P2 - Bus Style TP2 - Terminal block styl See techical illustrations
Dimensions	89 x 41 x 152mm
Weight	840g

PBB30C Series

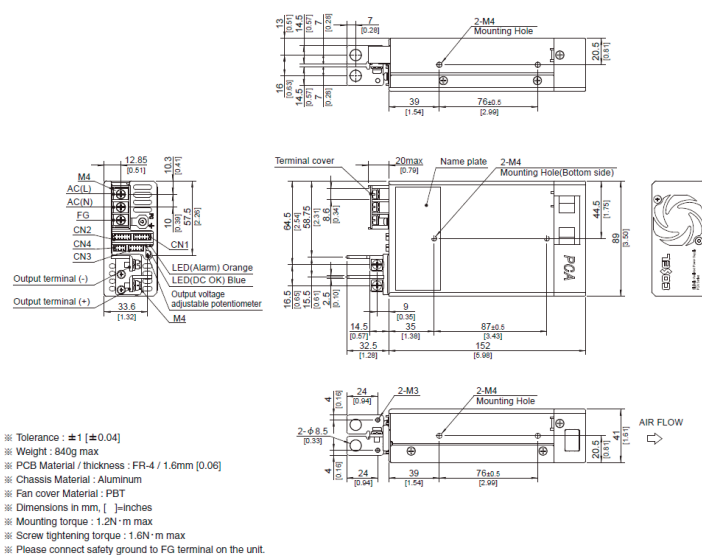
COSEL AC/DC POWER SUPPLY

SELECTION TABLE

MODEL NUMBER	OUTPUT VOLTAGE	VOLTAGE ADJ	OVER VOLTS PROTECT	OUTPUT CURRENT	POWER	CONNECTOR OPTION
PBB30C-5X-P2	5V	3 - 6V	6.25 - 7.00V	120A	600W	P2 or TP2
PBB30C-12X-P2	12V	7.2 - 14.4V	15.00 - 16.80V	53A	636W	P2 or TP2
PBB30C-15X-TP2	15V	9.0 - 18.0V	18.75 - 21.00V	43A	645W	P2 or TP2
PBB30C-24X-TP2	24V	14.4 - 28.8V	30.00 - 33.60V	27A	648W	P2 or TP2
PBB30C-32X-P2	32V	19.2 - 38.4V	40.00 - 44.80V	20A	640W	P2 or TP2
PBB30C-48X-P2	48V	28.8 - 57.6V	60.00 - 67.20V	13A	624W	P2 or TP2

Connector option: Bus Bar Style (P2) or Terminal Block (TP2)

PBB30C- P2 (BUS BAR STYLE)



PBB30C- TP2 (TERMINAL BLOCK STYLE)

