



Modupac+

2.32kW DC Power Core

PRODUCT DESCRIPTION

The Modupac+ series is designed using Enetek's ETR+948/1248 high efficiency switch mode rectifier modules and intelligent controller, complete with the respective load and battery distribution, AC incoming as well as surge protection. The solution can be customized accordingly to specific requirements.

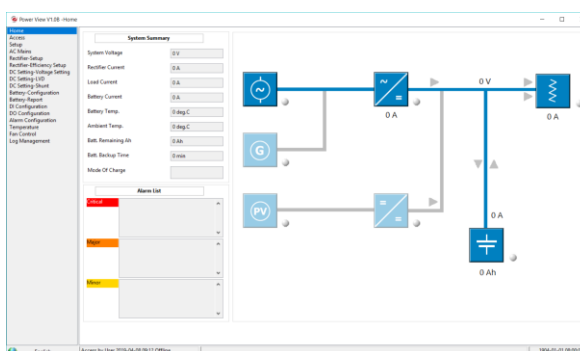
The user friendly SMU01 controller, coupled with its compact size and simple-to-operate interface, is highly adaptable and provides the monitoring and management of the system solution.

KEY FEATURES

- **Hot-Swap Rectifier Modules**
Rectifier modules are hot-swappable and hot-pluggable
- **Modular, Scalable Cabinet Design**
Flexible installations and capable of parallel cabinets for additional power/distribution
- **High Power Density**
Reduces footprint
- **Highly Efficient @ up to 95%**
Reduces losses and lowers operating costs
- **Front-to-back Airflow**
Unobstructed scalability of shelves
- **Excellent EMC Performance**
Lower interference and excellent susceptibility
- **Wide Input Voltage Range**
Continued operation in demanding grid conditions
- **Wide Temperature Range**
Applications in harsh climatic conditions
- **Compliant with Global Standards**

APPLICATIONS

- Macro cell BTS
- Microwave
- LTE / WiMax
- FTTX
- Broadband Access
- Optical Fibre Transmission System
- IDC (Internet Data Centres)



TECHNICAL SPECIFICATIONS

MODEL		Modupac+
Capacity Range		2.32kW
INPUT SPECIFICATIONS		
Mains Input Configuration		1-Phase 230Vac
Power Factor		≥ 0.99
Frequency		45Hz to 65Hz
THD		< 5% (50% to 100% load)
Input Protections (Module Level)		Soft Start
		Surge Protection
		Overvoltage Protection
OUTPUT SPECIFICATIONS		
Nominal Output Voltage		48.0Vdc
Output Power		2.32kW
Efficiency		Up to 95%
BATTERY DISTRIBUTION		
Battery Low Voltage Disconnect		BLVD @ 40A
Battery Distribution		2 x 30A 1P MCB
LOAD DISTRIBUTION		
Load Distribution		2 x 10A, 2 x16A 1P MCB
CONTROLLER and RECTIFIER TYPE		
Rectifier Module		ETR ⁺ 948/1248 range of rectifier modules
Controller Module		SMU01 (refer to datasheet)
ENVIRONMENTAL		
Operating Temperature Range		-40°C to +65°C (de-rates above 45°C)
Storage Temperature Range		-40°C to +70°C
Relative Humidity		Operating: 5% to 98% RH non-condensing
		Storage: 0% to 98% RH non-condensing
Acoustic Noise		<58dB @ full load, 40°C
PHYSICAL		
Dimensions WxDxH		482 x 290 x 44.45 (mm) (1U)
Net Weight		~5kg (excluding rectifier modules)
DESIGN STANDARDS		
Electrical Safety		EN/IEC62368-1
EMC		EN55022/CISPR22 Class A, EN61000-4-2/-3/-4/-5/-11

Authorised, valued-added distributor

Australia & New Zealand



Powerbox Australia Pty Ltd

Sydney Head Office
4 Beaumont Road,
Mt Kuring-Gai, NSW 2080
Australia



1800 251 380



sales@powerbox.com.au



powerbox.com.au

Powerbox Pacific Ltd

New Zealand Sales Office
1a Henry Rose Place,
Albany, Auckland
New Zealand 0632



09 4158 320



sales@powerbox.co.nz



powerbox.co.nz