



## moduflex<sup>+</sup>

### 24kW DC Power Core

## PRODUCT DESCRIPTION

The Moduflex+ series is designed using Enetek's high efficiency switchmode rectifier modules and intelligent controller, complete with the respective load and battery distribution, AC incoming as well as surge protection. The solution can be customized accordingly to specific requirements.

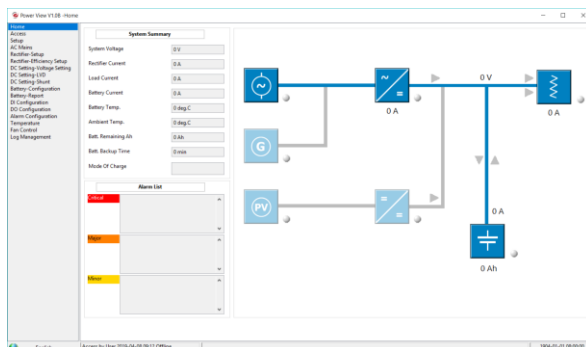
The user friendly SMU01 controller, coupled with its compact size and simple-to-operate interface, is highly adaptable and provides the monitoring and management of the system solution.

## APPLICATIONS

- Macro cell BTS
- Microwave
- LTE / WiMax
- FTTX
- Broadband Access
- Optical Fibre Transmission System
- IDC (Internet Data Centres)

## KEY FEATURES

- Hot-Swap Rectifier Modules
- Modular, Scalable Cabinet Design
- High Power Density
- Highly Efficient @ >96%
- Front-to-back Airflow
- Excellent EMC Performance
- Wide Input Voltage Range
- Wide Temperature Range
- Compliant with Global Standards



## TECHNICAL SPECIFICATIONS

MODEL		Moduflex+
Capacity Range		24kW
INPUT SPECIFICATIONS		
Mains Input Configuration		1-Phase 230Vac
		3-Phase 230Vac ( $\Delta$ )
		3-Phase 400Vac+N (Y)
Power Factor		$\geq 0.99$
Frequency		45Hz to 65Hz
THD		< 5% (50% to 100% load)
Input Protections		Soft Start
		Surge Protection
		Overvoltage Protection
OUTPUT SPECIFICATIONS		
Nominal Output Voltage		48.0Vdc
Output Power		24kW
Efficiency		>96%
BATTERY DISTRIBUTION		
Battery Low Voltage Disconnect		BLVD @ 400A
Battery Distribution		4 x 27mm width 80A-125A 1P MCB (Configurable)
LOAD DISTRIBUTION		
Load Low Voltage Disconnect		LLVD is optional
Load Distribution		12 x 18mm width 6A-63A 1P MCB (Configurable)
CONTROLLER and RECTIFIER TYPE		
Rectifier Module		ETR <sup>+</sup> range of rectifier modules
Controller Module		SMU01 (refer to datasheet)
ENVIRONMENTAL		
Operating Temperature Range		-20°C to +75°C (de-rates above 55°C)
Storage Temperature Range		-40°C to +75°C
Relative Humidity		Operating: 5% to 98% RH non-condensing
		Storage: 0% to 98% RH non-condensing
Acoustic Noise		<58dB @ full load, 40°C
PHYSICAL		
Dimensions WxDxH		482 x 390 x 266.7 (mm) (6U)
Net Weight		~20kg (excluding rectifier modules)
DESIGN STANDARDS		
Electrical Safety		EN/IEC62368-1
EMC		EN55022/CISPR22 Class B, EN61000-4-2/-3/-4/-5/-11

***Authorised, valued-added distributor***

Australia & New Zealand



**Powerbox Australia Pty Ltd**

Sydney Head Office  
4 Beaumont Road,  
Mt Kuring-Gai, NSW 2080  
Australia



1800 251 380



[sales@powerbox.com.au](mailto:sales@powerbox.com.au)



[powerbox.com.au](http://powerbox.com.au)

**Powerbox Pacific Ltd**

New Zealand Sales Office  
1a Henry Rose Place,  
Albany, Auckland  
New Zealand 0632



09 4158 320



[sales@powerbox.co.nz](mailto:sales@powerbox.co.nz)



[powerbox.co.nz](http://powerbox.co.nz)