



## Moduflex<sup>+</sup> 8kW DC Power Core

### PRODUCT DESCRIPTION

The Moduflex+ series is designed using Enetek's high efficiency switchmode rectifier modules and intelligent controller, complete with the respective load and battery distribution, AC incoming as well as surge protection. The solution can be customized accordingly to specific requirements.

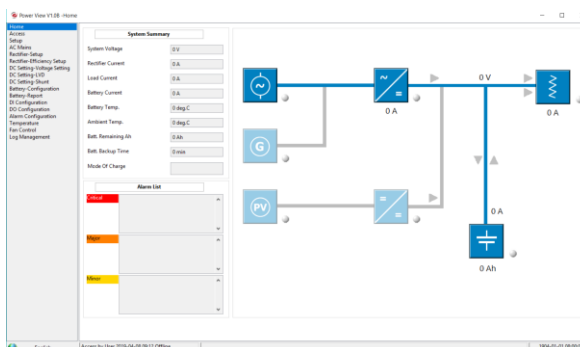
The user friendly SMU01 controller, coupled with its compact size and simple-to-operate interface, is highly adaptable and provides the monitoring and management of the system solution.

### KEY FEATURES

- **Hot-Swap Rectifier Modules**  
Rectifier modules are hot-swappable and hot-pluggable
- **Modular, Scalable Cabinet Design**  
Flexible installations and capable of parallel cabinets for additional power/distribution
- **High Power Density**  
Reduces footprint
- **Highly Efficient @ >96%**  
Reduces losses and lowers operating costs
- **Front-to-back Airflow**  
Unobstructed scalability of shelves
- **Excellent EMC Performance**  
Lower interference and excellent susceptibility
- **Wide Input Voltage Range**  
Continued operation in demanding grid conditions
- **Wide Temperature Range**  
Applications in harsh climatic conditions
- **Compliant with Global Standards**

### APPLICATIONS

- Macro cell BTS
- Microwave
- LTE / WiMax
- FTTX
- Broadband Access
- Optical Fibre Transmission System
- IDC (Internet Data Centres)



## TECHNICAL SPECIFICATIONS

| MODEL                          |  | Moduflex+   |
|--------------------------------|--|---|
| Capacity Range                 |  | 8kW   |
| INPUT SPECIFICATIONS           |  |   |
| Mains Input Configuration      |  | 1-Phase 230Vac                                    |
| Power Factor                   |  | ≥ 0.99  |
| Frequency                      |  | 45Hz to 65Hz                                      |
| THD                            |  | < 5% (50% to 100% load)                           |
| Input Protections              |  | Soft Start  |
|                                |  | Surge Protection                                  |
|                                |  | Overvoltage Protection                            |
| OUTPUT SPECIFICATIONS          |  |   |
| Nominal Output Voltage         |  | 48.0Vdc   |
| Output Power                   |  | 8kW   |
| Efficiency                     |  | >96%  |
| BATTERY DISTRIBUTION           |  |   |
| Battery Low Voltage Disconnect |  | BLVD @ 100A                                       |
| Battery Distribution           |  | 2 x 63A 1P MCB (Configurable)                     |
| LOAD DISTRIBUTION              |  |   |
| Low Low Voltage Disconnect     |  | LLVD is optional                                  |
| Load Distribution              |  | 4 x 18mm width 6-63A 1P MCB (Configurable)        |
| CONTROLLER and RECTIFIER TYPE  |  |   |
| Rectifier Module               |  | ETR <sup>+</sup> range of rectifier modules       |
| Controller Module              |  | SMU01 (refer to datasheet)                        |
| ENVIRONMENTAL                  |  |   |
| Operating Temperature Range    |  | -20°C to +75°C (de-rates above 55°C)              |
| Storage Temperature Range      |  | -40°C to +70°C                                    |
| Relative Humidity              |  | Operating: 5% to 98% RH non-condensing            |
|                                |  | Storage: 0% to 98% RH non-condensing              |
| Acoustic Noise                 |  | <58dB @ full load, 40°C                           |
| PHYSICAL                       |  |   |
| Dimensions WxDxH               |  | 482 x 432 x 88.8 (mm) (2U)                        |
| Net Weight                     |  | ~10kg (excluding rectifier modules)               |
| DESIGN STANDARDS               |  |   |
| Electrical Safety              |  | EN/IEC62368-1                                     |
| EMC                            |  | EN55022/CISPR22 Class B, EN61000-4-2/-3/-4/-5/-11 |

***Authorised, valued-added distributor***

Australia & New Zealand



**Powerbox Australia Pty Ltd**

Sydney Head Office  
4 Beaumont Road,  
Mt Kuring-Gai, NSW 2080  
Australia



1800 251 380



[sales@powerbox.com.au](mailto:sales@powerbox.com.au)



[powerbox.com.au](http://powerbox.com.au)

**Powerbox Pacific Ltd**

New Zealand Sales Office  
1a Henry Rose Place,  
Albany, Auckland  
New Zealand 0632



09 4158 320



[sales@powerbox.co.nz](mailto:sales@powerbox.co.nz)



[powerbox.co.nz](http://powerbox.co.nz)