



## Moduflex<sup>+</sup> 4kW DC Power Core

### PRODUCT DESCRIPTION

The Moduflex+ series is designed using Enetek's high efficiency switchmode rectifier modules and intelligent controller together with the respective load and battery distribution, AC incoming as well as surge protection. The solution can be customized to accordingly to specific requirements.

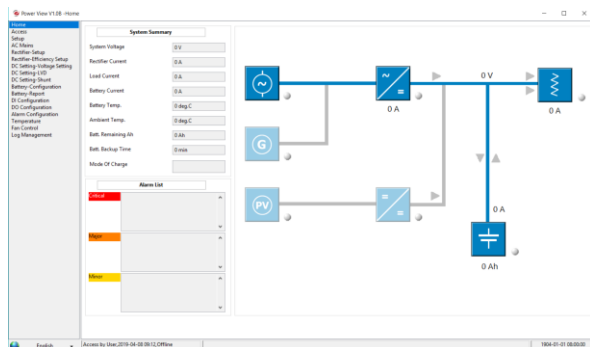
The user friendly SMU01 controller, coupled with its compact size and simple-to-operate interface, is highly adaptable and provides the monitoring and management of the system solution.

### KEY FEATURES

- **Hot-Swap Rectifier Modules**  
Rectifier modules are hot-swappable and hot-pluggable
- **Modular, Scalable Cabinet Design**  
Flexible installations and capable of parallel cabinets for additional power/distribution
- **High Power Density**  
Reduces footprint
- **Highly Efficient @ >96%**  
Reduces losses and lowers operating costs
- **Front-to-back Airflow**  
Unobstructed scalability of shelves
- **Excellent EMC Performance**  
Lower interference and excellent susceptibility
- **Wide Input Voltage Range**  
Continued operation in demanding grid conditions
- **Wide Temperature Range**  
Applications in harsh climatic conditions
- **Compliant with Global Standards**

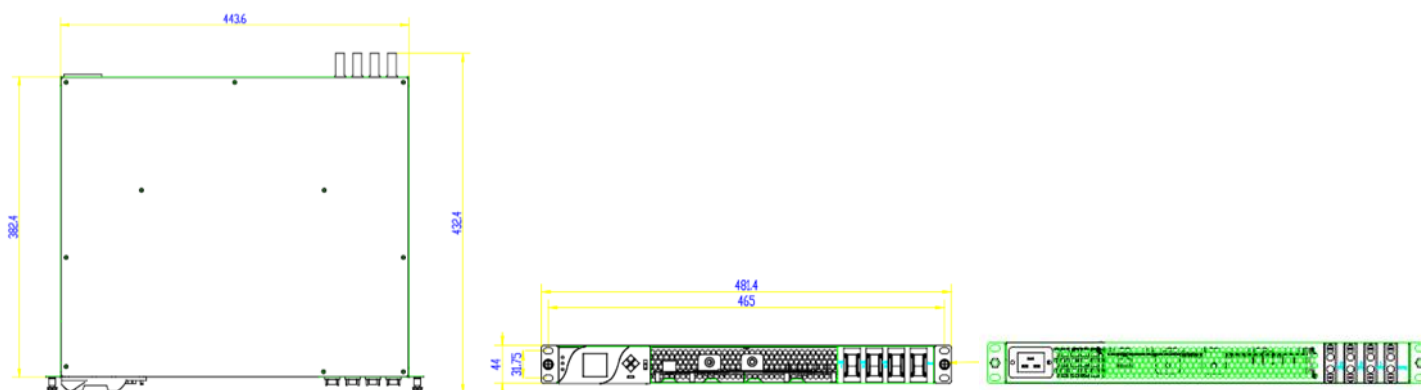
### APPLICATIONS

- Macro cell BTS
- Microwave
- LTE / WiMax
- FTTX
- Broadband Access
- Optical Fibre Transmission System
- IDC (Internet Data Centres)



## TECHNICAL SPECIFICATIONS

MODEL		Moduflex+
Capacity Range		4kW
INPUT SPECIFICATIONS		
Mains Input Configuration		1-Phase 230Vac
Power Factor		$\geq 0.99$
Frequency		45Hz to 65Hz
THD		< 5% (50% to 100% load)
Input Protections (Module Level)		Soft Start
		Surge Protection
		Overvoltage Protection
OUTPUT SPECIFICATIONS		
Nominal Output Voltage		48.0Vdc
Output Power		4kW
Efficiency		> 96%
BATTERY DISTRIBUTION		
Battery Low Voltage Disconnect		BLVD @ 40A
Battery Distribution		1 x 30A 1P MCB
LOAD DISTRIBUTION		
Load Distribution		3 x16A 1P MCB
CONTROLLER and RECTIFIER TYPE		
Rectifier Module		ETR <sup>+</sup> 2048/3048 range of rectifier modules
Controller Module		SMU01 (refer to datasheet)
ENVIRONMENTAL		
Operating Temperature Range		-20°C to +75°C (de-rates above 55°C)
Storage Temperature Range		-40°C to +85°C
Relative Humidity		Operating: 5% to 98% RH non-condensing
		Storage: 0% to 99% RH non-condensing
Acoustic Noise		<58dB @ full load, 40°C
PHYSICAL		
Dimensions WxDxH		481.4 x 432.4 x 44 (mm) (1U)
Net Weight		~5kg (excluding rectifier modules)
DESIGN STANDARDS		
Electrical Safety		EN/IEC62368-1
EMC		EN55022/CISPR22 Class A, EN61000-4-2/-3/-4/-5/-11



Due to continuous product development, specifications are subject to change without prior notice

Rev02

***Authorised, valued-added distributor***

Australia & New Zealand



**Powerbox Australia Pty Ltd**

Sydney Head Office  
4 Beaumont Road,  
Mt Kuring-Gai, NSW 2080  
Australia



1800 251 380



[sales@powerbox.com.au](mailto:sales@powerbox.com.au)



[powerbox.com.au](http://powerbox.com.au)

**Powerbox Pacific Ltd**

New Zealand Sales Office  
1a Henry Rose Place,  
Albany, Auckland  
New Zealand 0632



09 4158 320



[sales@powerbox.co.nz](mailto:sales@powerbox.co.nz)



[powerbox.co.nz](http://powerbox.co.nz)