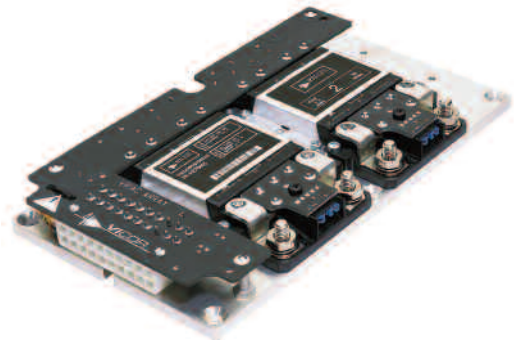


VIPAC ARRAY

50-750 WATTS - DC/DC SINGLE & MULTIPLE OUTPUT CONFIGURABLE

FEATURES

- DC input 9-425 VDC over 8 ranges
- Configurable single, dual, triple and quad outputs up to 750W
- Any outputs 0.5-48VDC
- Current share option for high power/redundant operation
- Fully connectorized input & output for simplified hook up
- Rugged, low profile, cold plate chassis
- High temperature capability



PRODUCT INFORMATION

The VIPAC Array is a highly flexible system of DC input, power building-blocks that can be configured with as many as four user definable outputs on a low profile, cold plate chassis. VIPAC Array offers the convenience of a prepackaged, chassis mount solution with the performance and power density of Vicor's 2nd Generation, DC/DC converters.

VIPAC Arrays can be configured with standard inputs of 24, 28, 48, 72, 110, 150, 300 or 375 VDC and standard outputs from 2 to 54VDC at power levels up to 750 Watts per output. A total of 8 standard chassis configurations offers the user a choice of power and mechanical options to fit any budget or design.

VIPAC Arrays are ideal for use in distributed and modular power systems where power density and reliable operation are critical. A current share option is available on single output models enabling them to be used in applications requiring either redundant operation or kilowatts of power. The 300 and 375Vdc input versions can be coupled to a bulk AC Front end to create a modular, scalable power supply serving a variety of power architectures from centralized to distributed. VIPAC Arrays include internal fusing, a global enable/disable function and connectorized input and output terminations to speed system installation while a versatile cold plate chassis simplifies thermal management and mounting.

SELECTION TABLE

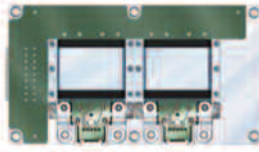
INPUT VOLTAGE	OUTPUT VOLTAGE (V) AND MAX POWER (W)										
	2 V	3.3 V	5 V	6.5 V	8 V	12 V	15 V	24 V	28 V	36 V	48 V
24 VDC (18 – 36 V)											
Micro family		75	100		100	100	100	100	100	100	100
Mini family		150	200		200	200	200	200	200	200	200
Maxi family		264	400	400	300	400	400	400	500	400	400
28 VDC (9 – 36 V)											
Micro family		50	50			100	100	100	100	100	100
Mini family		75	75			125	150	150	150	150	150
Maxi family		150	175	200	200	200	200	200	200	200	200
48 VDC (36 – 75 V)											
Micro family	50	75	100		150	150	150	150	150	150	150
Mini family	100	150	200			250	250	250	250	250	250
Maxi family		264	400		400	500	500	500	500	500	500
72 VDC (43 – 110 V)											
Micro family		75	100		100	150	150	150	150	150	150
Mini family		100	150		150	250	250	250	250	250	250
Maxi family		264	300		300	400	400	400	400	400	400
110 VDC (66 – 154 V)											
Micro family		50	75		75	100	100	100	100	100	100
Mini family		100	150		150	200	200	200	200	200	200
Maxi family		200	300		300	400	400	400	400	400	400
150 VDC (100 – 200 V)											
Micro family		75	100		100	150	150	150	150	150	150
Mini family		150	200		200	250	250	250	250	250	250
Maxi family		264	400		400	500	500	500	500	500	500
300 VDC (180 – 375 V)											
Micro family	50	75	100		100	150	150	150	150	150	150
Mini family	100	150	200		200	250	250	250	250	250	250
Maxi family	160	264	400		400	500	500	500	500	500	500
375 VDC (250 – 425 V)											
Micro family	50	75	100		100	150	150	150	150	150	150
Mini family	100	150	200		200	300	300	300	300	300	300
Maxi family *	160	264	400		400	600	600	600	600	600	600

NOTE: All power values are in watts * the 375vdc MAXI module is also available in output voltages of 32V and 54V @ 600W.

VIPAC ARRAY

50-750 WATTS - DC/DC SINGLE & MULTIPLE OUTPUT CONFIGURABLE

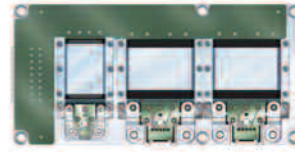
DC-DC PCB MOUNTED CONVERTERS & POWER MODULES



VA-A

2 MINIS

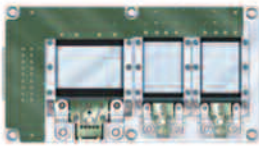
- 92,0 x 170,0 x 19,8 mm
- 590 g
- Single or dual output
- Up to 600 W



VA-E

1 MICRO, 2 MINIS

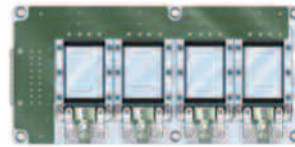
- 92,0 x 191,0 x 19,8 mm
- 635 g
- Dual or triple outputs
- Up to 750 W total



VA-B

1 MINI, 2 MICROS

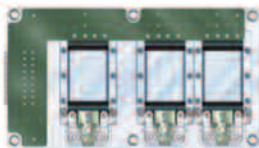
- 92,0 x 170,0 x 19,8 mm
- 590 g
- Single, dual or triple outputs
- Up to 600 W total



VA-F

4 MICROS

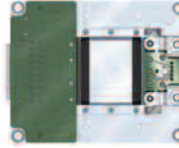
- 92,0 x 191,0 x 19,3 mm
- 608 g
- Dual, triple or quad outputs
- Up to 600 W total



VA-C

3 MICROS

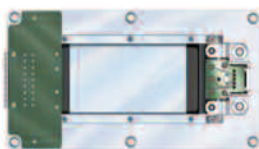
- 92,0 x 170,0 x 19,3 mm
- 499 g
- Dual or triple outputs
- Up to 450 W total



VA-G/K

1 MINI

- 92,0 x 112,0 x 19,8 mm
- 318 g
- Single output
- Up to 300 W
- Current share option



VA-D/J

1 MAXI

- 92,0 x 170,0 x 19,8 mm
- 499 g
- Single output
- Up to 600 W
- Current share option



VA-H

2 MICROS

- 92,0 x 112,0 x 19,8 mm
- 318 g
- Single or dual outputs
- Up to 300 W