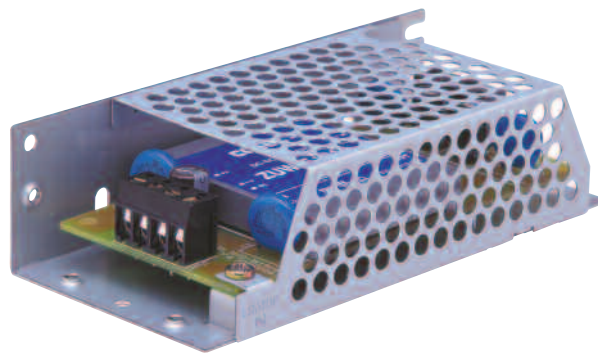


# PBBA-CM Series

## CHASSIS MOUNT

### FEATURES

- Regulated Output
- Overcurrent protected
- 2:1 Input ratio
- Chassis mounted
- Screw termination
- C-tick compliant



### PRODUCT INFORMATION

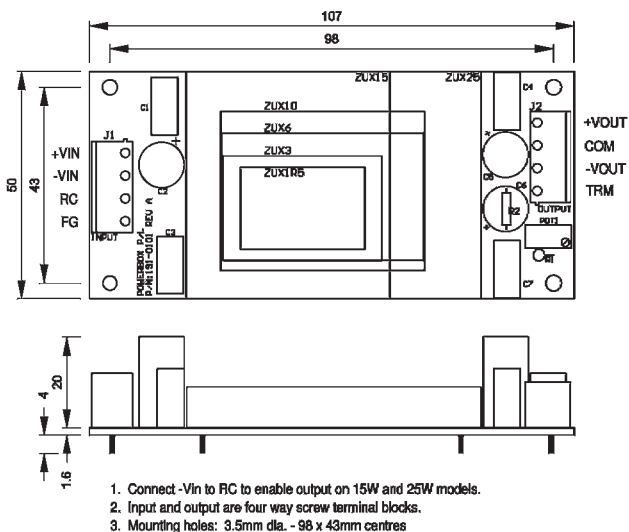
The PBBA-CM series chassis mounting DC/DC converters are available in single and Multiple Outputs. They are 10W, 15W and 25W PBBA series PCB mounting converters, mounted in an easy to install chassis mounting enclosure with screw termination for easy installation.

### PART NUMBERING

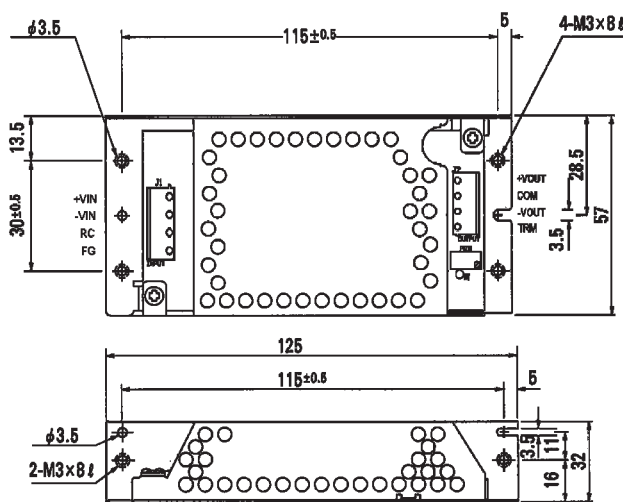
PBBA-2505G-CM-  
 1      2      3      4

1. Series Name
2. 5 or 6 digit product code (refer to PBBA series data sheets)
3. Enclosure  
     CM: Chassis Mount  
     PCB: Open PCB
4. Optional – Trim Adjustable output voltage (contact Powerbox)

### TECHNICAL ILLUSTRATIONS



PBBA-PCB



PBBA-CM