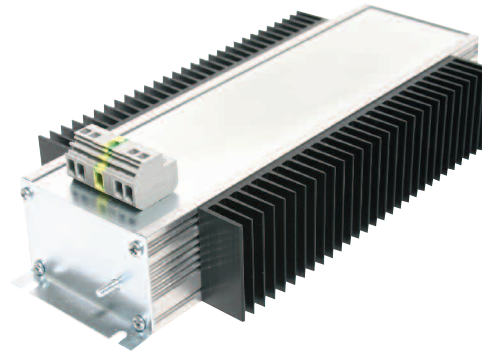


PB271 Series

150 WATTS RAILWAY DC/DC CONVERTER

FEATURES

- Rugged DC/DC converter for railway applications
- 45-154Vdc input / 12 or 24Vdc output.
- High temperature operation, no cooling fan.
- Up 60°C ambient with full load, derate up to 90°C.
- Shock & vibration protection (potted).
- Overvoltage, short circuit, over-temperature, input transients & reverse polarity protection.
- Complies with EN50121-3-2: 2000 and EN50155: 1996
- Output terminal, available in screw, cage clamp or phoenix terminals.
- Designed & manufactured in Australia.



SPECIFICATIONS

INPUT	
Voltage	45-154Vdc
Current	4.2A
Isolation	In/Cha 2121Vdc, 1 min. In/Out 4242Vdc, 1 min. Out/Cha 707Vdc, 1 min.

Overvoltage protection	At 160Vdc, auto recovery.
Reverse voltage protection	Indefinite, series blocking diode on input.

OUTPUT	
Voltage	See Table
Current	See Table
Power	150 watts.
Ripple & noise	30mV p-p
Line regulation	0.5% of Vnom
Load regulation	3% of Vnom @ Vout = 12V, 1.5% of Vnom @ Vout = 24V
Overvoltage protection	O/P: 130% of Vnom, manual restart required.
Overcurrent protection	110% of Inom, auto recovery.
Short circuit protection	Indefinite, auto recovery.
Over temperature protection	Auto recovery.
Efficiency	85% at full load.

ENVIRONMENTAL	
Operating Temperature	“H”, with optional heat sink -20°C – 60°C (Full load). Derate from 60°C to zero load at 90°C. Without optional heat sink -20°C – 40°C (Full load). Derate from 40°C to zero load at 85°C.
Relative Humidity	5 – 90% (non-condensing)
Cooling	Natural convection

STANDARDS

Safety	Complies with AS/NZS60950:2000
EMC	Complies with EN50121-3-2: 2000
Electrical service conditions	Complies with EN50155: 1996

MECHANICAL

General	Chassis mount enclosure
Input & output connection	-S: 4 way screw T/B 20A/300V suitable for up to 4mm ² wire -C: 5 way cage clamp T/B 20A/300V suitable for up to 4mm ² wire -P: 4 way pluggable T/B 20A /300V suitable for up to 4mm ² wire
Ground Terminal	M4x12 stud (C & S versions only).
Length	290mm
Width	80mm (without heatsinks) 130mm (with heatsinks)
Height (Including terminals)	-S: 69mm -C: 73mm -P: 51mm
Weight (unpacked)	1.9kgs (without heatsinks) 2.4kgs (with heatsinks)
Potting	Sylgard 170, V ₀ rated, MIL grade thermally conductive silicon elastomer

PB271 ORDERING INFORMATION

PB271	-	12	S	-	H
1		2	3		4

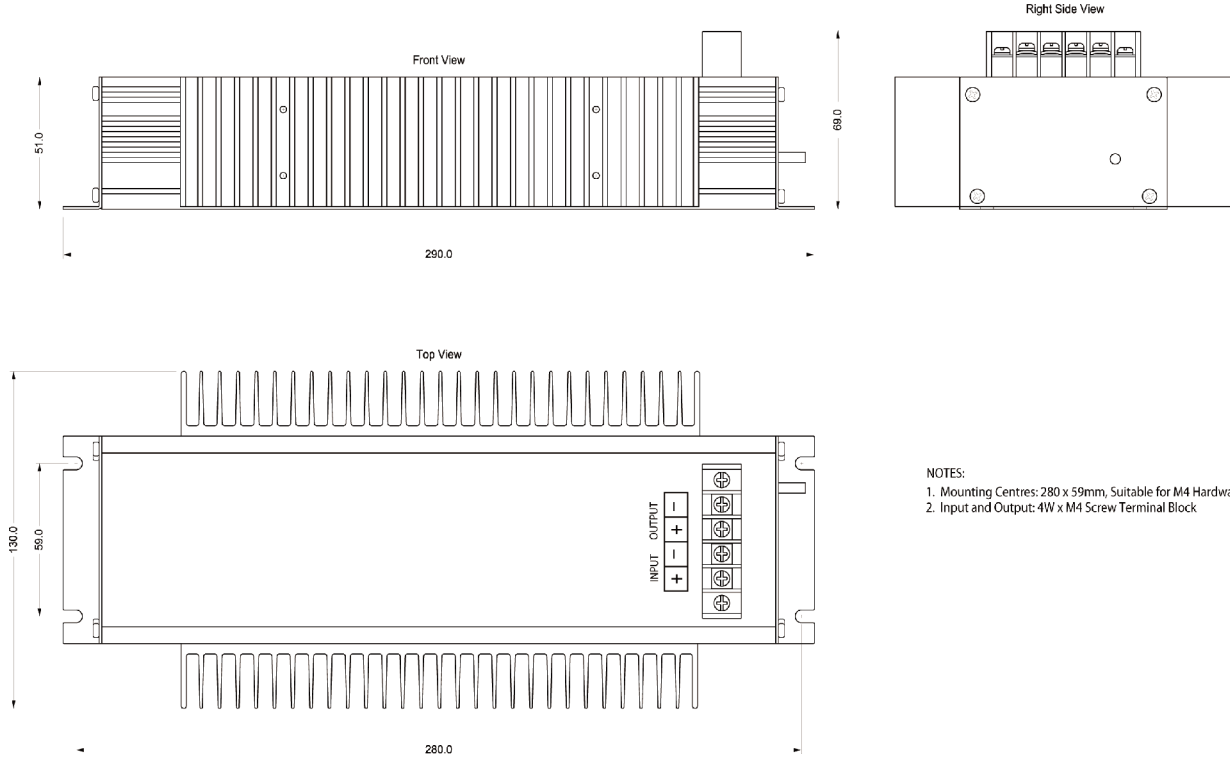
1. Series name
2. Output voltage
-12
-24
3. Output connection
-S (Screw terminal block)
-C (Cage clamp terminal block)
-P (Pluggable terminal block)
4. Optional
- Heatsinks

PB271 Series

150 WATTS DC/DC SINGLE RAILWAY

RAILWAY CONVERTERS

S VARIANT, WITH HEATSINKS



S VARIANT, WITH NO HEATSINKS

